

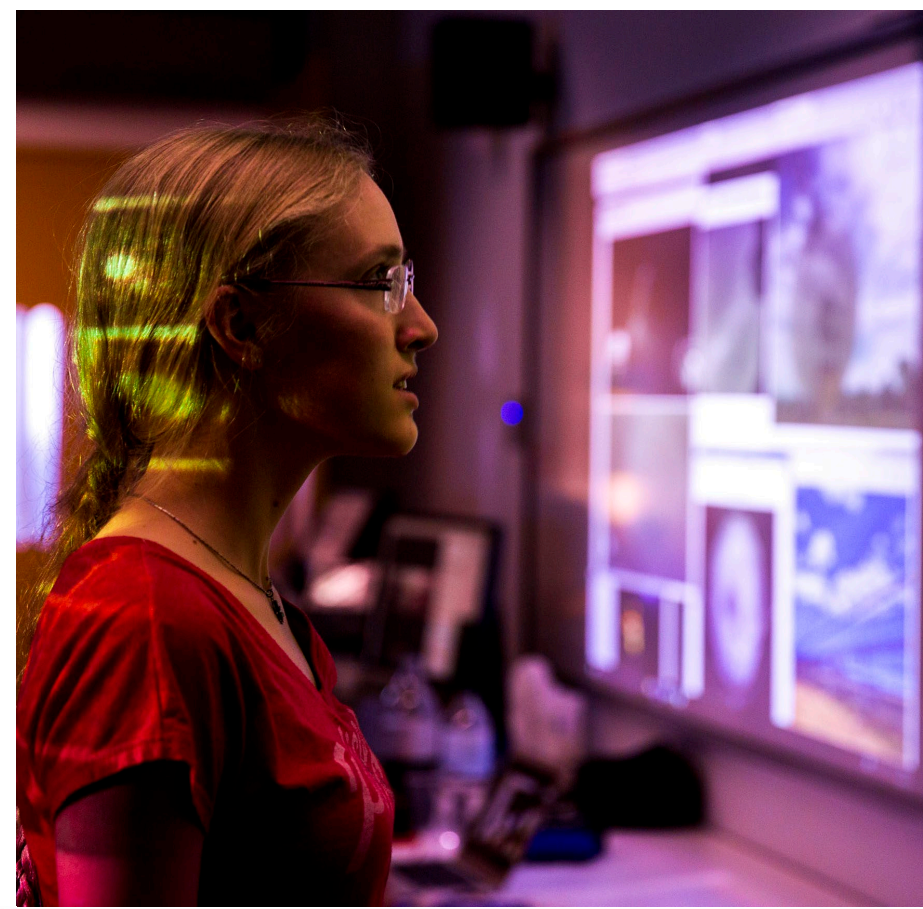
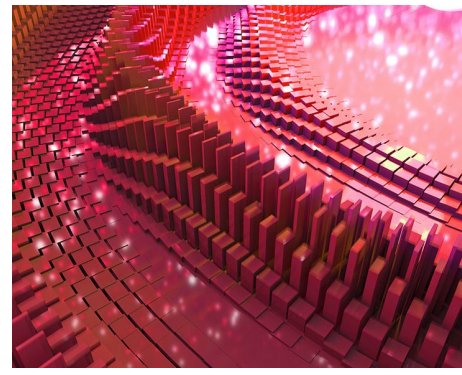
.
.

Bachelor of Biomedical Science

Associate Professor Junhua Xiao

MBBS PhD FHEA

Deputy Chair, Department of Biomedical,
Health and Exercise Sciences



. .
. .

.
.
.
.

- -
 -
 -
 -
 -
- -
 -
 -
 -
 -

Acknowledgement of Country

We respectfully acknowledge the Wurundjeri People of the Kulin Nation, who are the Traditional Owners of the land on which Swinburne’s Australian campuses are located in Melbourne’s east and outer-east, and pay our respect to their Elders past, present and emerging.

We are honoured to recognise our connection to Wurundjeri Country, history, culture, and spirituality through these locations, and strive to ensure that we operate in a manner that respects and honours the Elders and Ancestors of these lands.

We also respectfully acknowledge Swinburne’s Aboriginal and Torres Strait Islander staff, students, alumni, partners and visitors.

We also acknowledge and respect the Traditional Owners of lands across Australia, their Elders, Ancestors, cultures, and heritage, and recognise the continuing sovereignties of all Aboriginal and Torres Strait Islander Nations.

- -
- -
- -
 -
 -
 -
 -
 -
 -
 -
 -
 -
 -
- -
 -
 -
 -
 -
 -
 -
 -
 -
 -
 -
 -



About Swinburne

Swinburne is an ambitious and tech driven university, we focus on industry alignment and graduate outcomes



Top 250 globally

Times Higher Education World University Rankings
2024



Top 25 Under 50*

Times Higher Education Young University Rankings
2024

*Best universities in the world under 50 years old



Top 1% globally

QS World University Rankings 2024

But what does this mean for you?

- Swinburne has ranked 2nd in Victoria, and 3rd in Australia for the overall education experience for undergraduate students (University Student Experience Survey, 141 institutions in the survey)

School of Health Sciences undergraduate degrees



Biomedical
Science

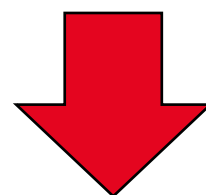
Nutrition

Health Science

Exercise &
Sports Science

Nursing

Psychology



Postgraduate Pathways from undergraduate degrees

Physiotherapy

Dietetics

Occupational
Therapy

Research,
PhD

Why study a Bachelor of Biomedical Science?

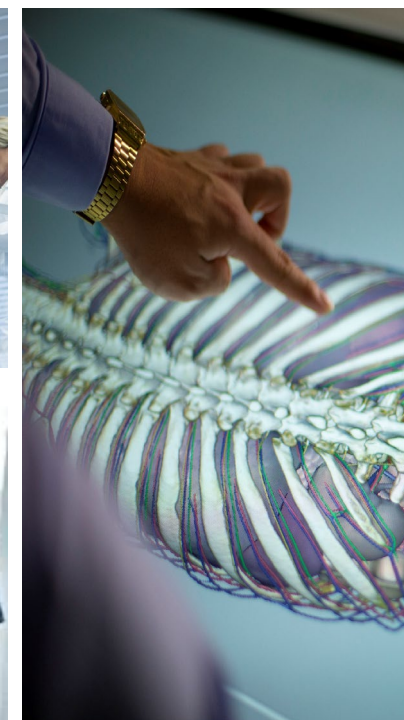
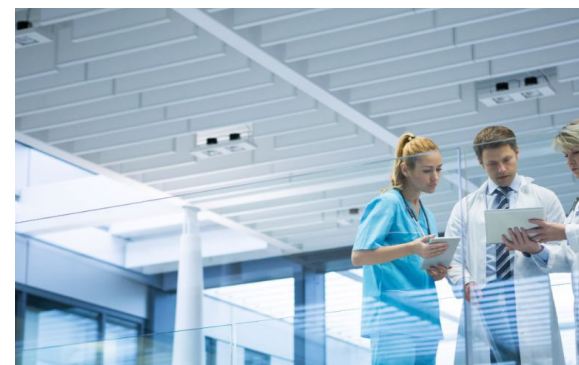


- The Bachelor of Biomedical Science equips students with the knowledge and skills for a **career working in medical healthcare and research**, one of Australia's largest growth areas
- The degree promotes interdisciplinary study, **investigating human health and disease**, including the cause of diseases and how they can be diagnosed and treated
- Clearly **defined pathways into further studies in research and postgraduate courses** in Physiotherapy, Dietetics, and Occupational Therapy at Swinburne, with options to also convert to postgraduate programs at other universities (e.g. Doctor of Medicine)
- You **will gain real industry experience**, work integrated learning (WIL) is a key pillar of the university - you will get hands on experience improving your employability
- Learn with **cutting - edge technologies**, health devices, digital tools and virtual reality platforms



Studying Bachelor of Biomedical Science at Swinburne

- A major pathway leading to postgraduate health professional courses:
 - Master of Physiotherapy
 - Master of Occupational Therapy
 - Master of Dietetics
 - Medicine (almost all do!)*
 - Plus, **broad career options in the health sector**
- **Option of double majors or double degrees** to provide students with real-world job opportunities and diverse career options
- **Work-integrated learning experiences:** Industry research projects, internships, professional placements and more!
- **Learn with world-class equipment** such as MRI and MEG!
- **Strong industry connections**



• • • • •



Entry options



For School leavers:

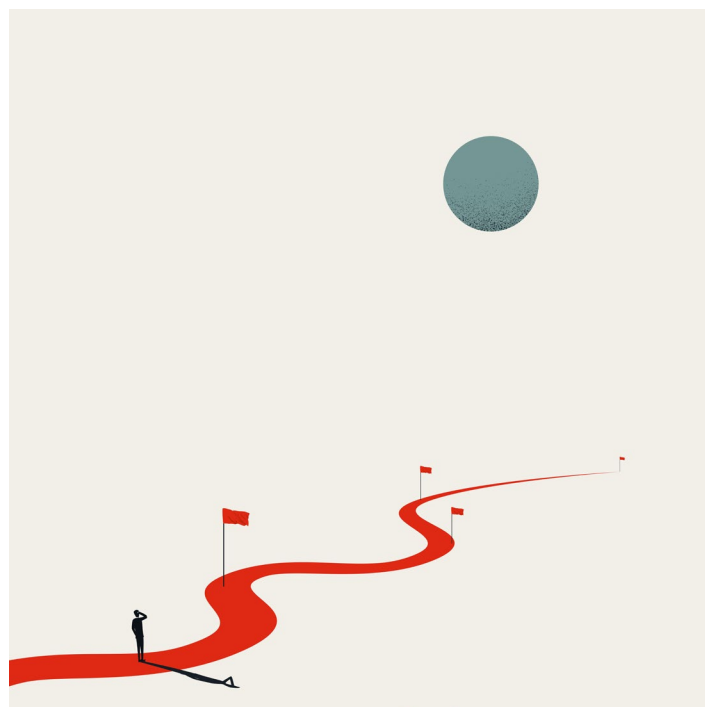
Bachelor of Biomedical Science

Hawthorn Campus

3 years full-time

Guaranteed Entry ATAR: 60

.	.	.	.
.	.	.	.
.	.	.	.
.	.	.	.
.	.	.	.
.	.	.	.
.	.	.	.



UniLink

Pathway into the
second year of the
degree

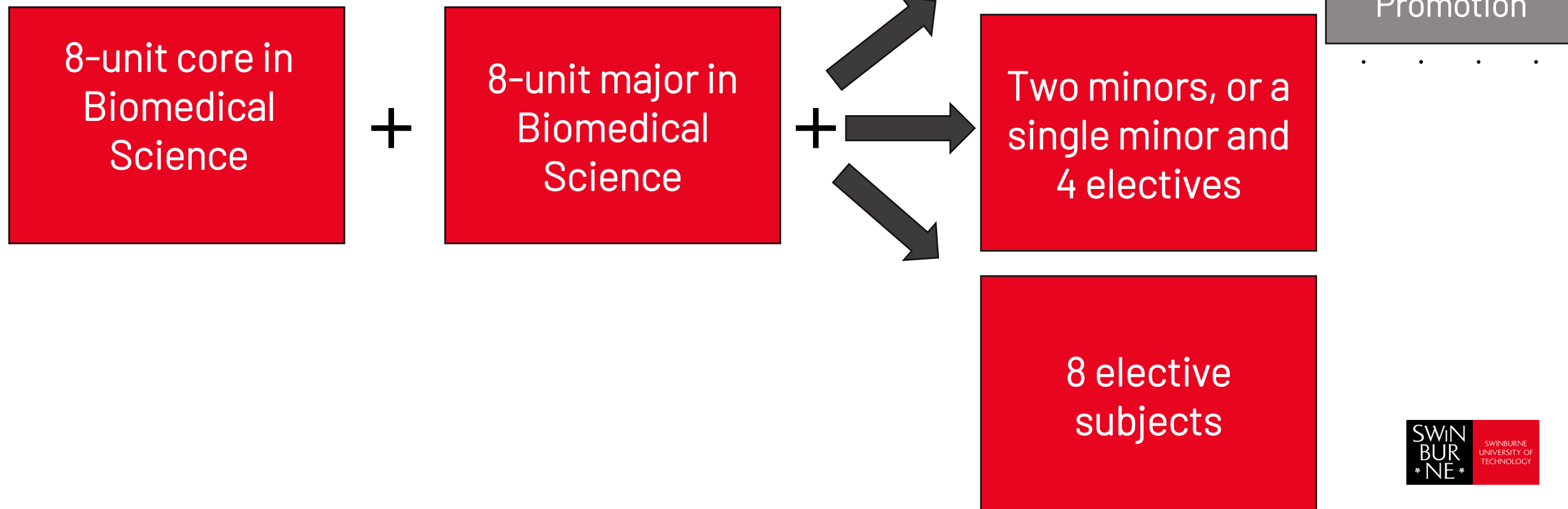
TAFE
courses

- Allow application into a bachelor degree
- May offer credit towards related degree

Bachelor of Biomedical Science

- Course Structure

Flexibility in its design



Bachelor of Biomedical Science

- Course Structure

Core Units

Introduction to Biomedical Science

Anatomy and Physiology

Digital Health Foundations

Foundations of Statistics

Epidemiology

Health and Disease Across the Life Course

Research Methods for Health and Medical Sciences

Biomedical Research Project

Biomedical Science major

Musculoskeletal Anatomy Across the Lifespan

Chemistry

Introduction to Biochemistry

Infections and Immunology

Physiology in Medical and Health Sciences

Genes and Genomics

Body Function and Structure

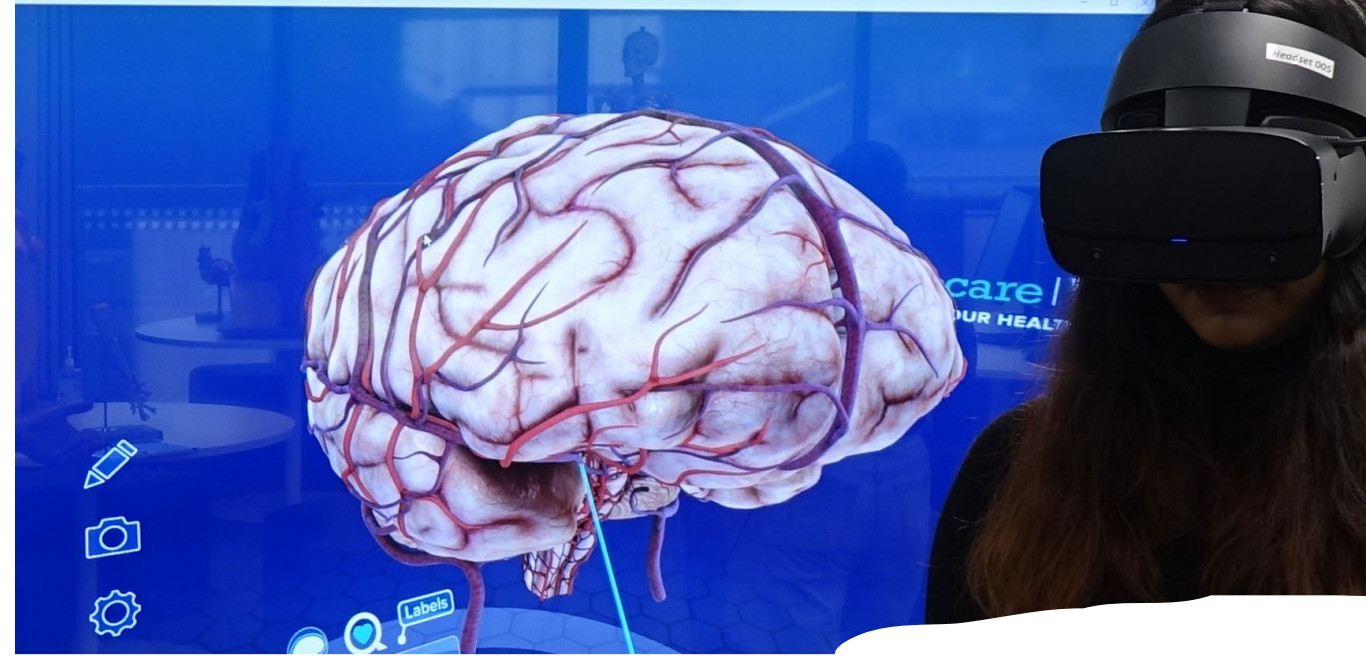
Pathophysiology

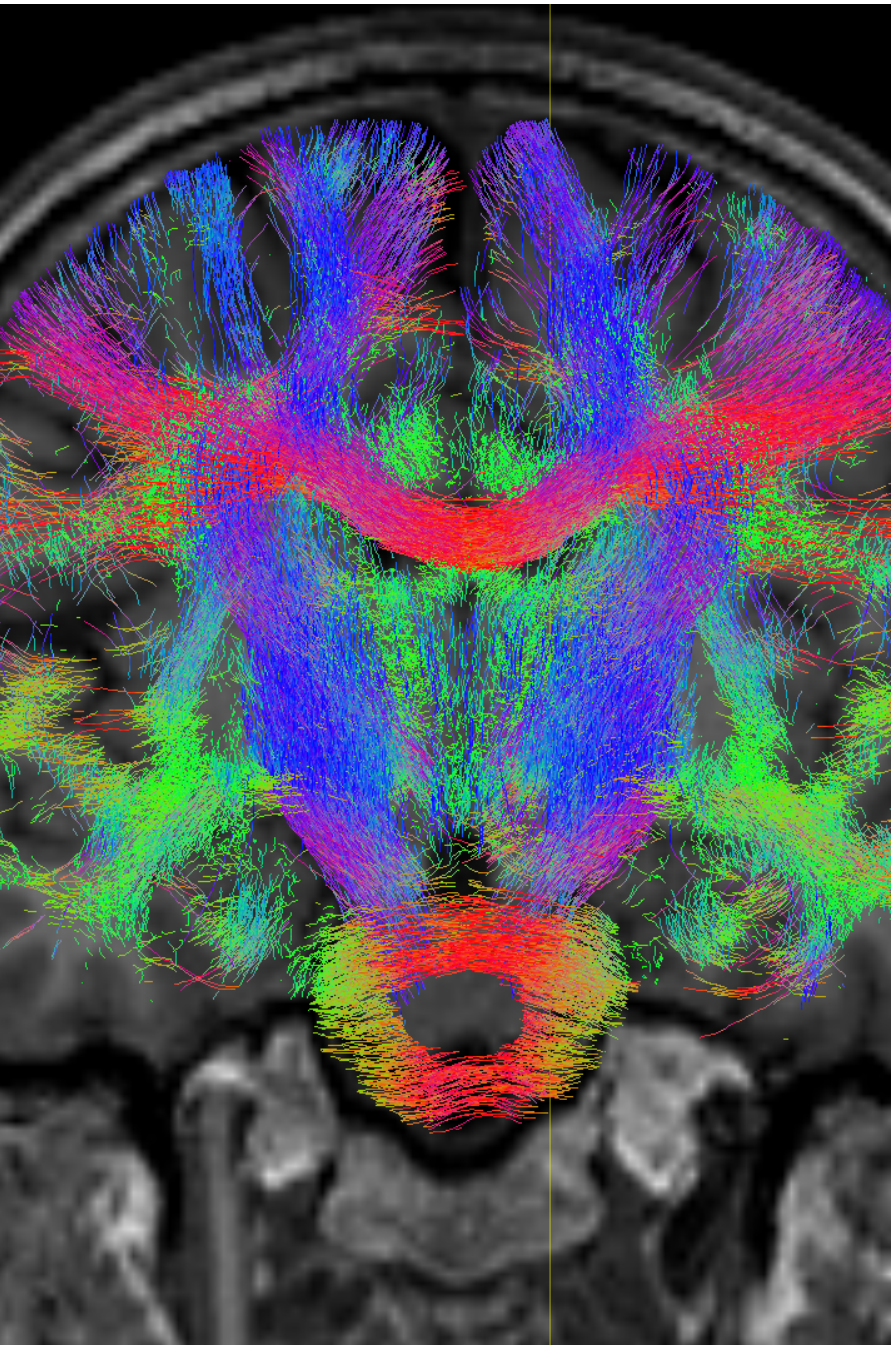
A second 8-unit major

Two minors, or a single minor and 8 electives

8 elective subjects

Teaching Facilities: Digital Anatomy Laboratory





Teaching Facilities: Neuroimaging Facility

.

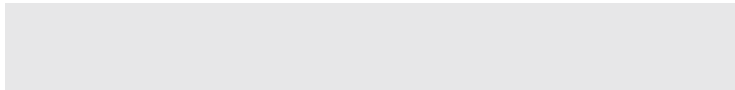
Careers and Pathways

- Laboratory scientist in hospitals or pharma
- Pharmaceutical and biotechnology sector
- Sleep lab scientist
- Technical support officer in Pathology Clinic
- Research assistant
- Medical and pharmaceutical sales

Entry pathway to:

- Postgraduate studies at Swinburne include Masters in Physiotherapy, Dietetics, and Occupational Therapy.
- Postgraduate courses including medicine can be entered at other universities.
- Research: Honours or Masters > PhD

.
.
.
.
.
.
.



Placement partners

Work Integrated Learning


Placements in hospitals



AlfredHealth



Medtronic



Alumni Stories

“Swinburne’s Biomedical Sciences major has thoroughly challenged me and pushed me to become more resilient and persevering. The course, together with Swinburne’s comprehensive resources and encouraging educational facilitators, has prepared me toward a career in medicine, where I am confident that I can further grow to become the best kind of health practitioner I can be.”

Nicole Marie Ilagan
Biomed Science Student 2022



A 10x10 grid of dots, consisting of 10 rows and 10 columns of small black dots. The dots are arranged in a regular, repeating pattern across the entire page.

